



JST26UF-800BW 25A TRIAC

Rev.A.1.0

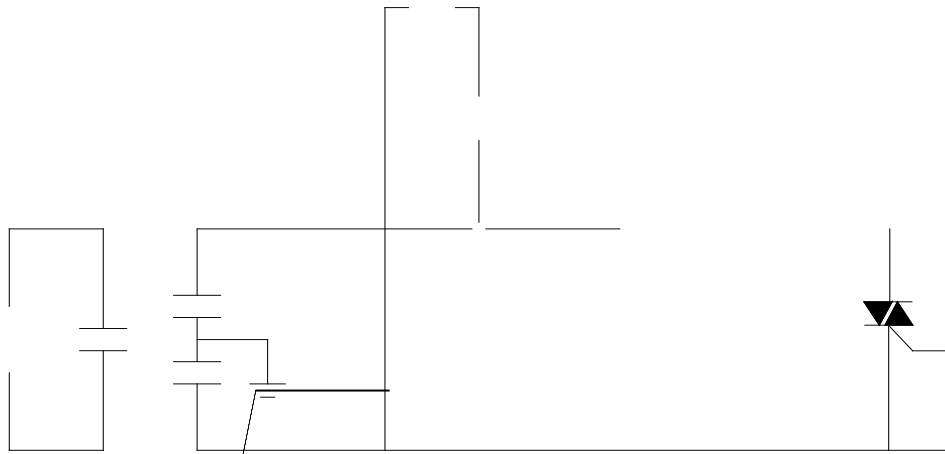
DESCRIPTION:

⊠ 36 ⊞ -800BW ~~http~~

$P_{G(AV)}$	$f_j=125$)	$P_{G(AV)}$	0.5	W
P_{GM}		P_{GM}	10	W
V_p	($T_j=25$; ρ - ρ - FIG.7)	V_p	5	V

ELECTRICAL CHARACTERISTICS($T_j=25$)

Symbol	Test Condition	Quadrant	Value	Unit	
I_{GT}	$V_D=12V$ $L=33$	- -	MAX .	50	A
V_{GT}		- -	MAX .	1	V
V_{GD}	V				



PACKAGE MECHANICAL DATA



© 2023 JieJie Microelectronics Co., Ltd.
All rights reserved.
This document is the property of JieJie Microelectronics Co., Ltd.
No part of this document may be reproduced, stored in a retrieval system, or transmitted in any form or by any means, electronic, mechanical, photocopying, recording, or otherwise, without the prior written permission of JieJie Microelectronics Co., Ltd.

JieJie Microelectronics Co., Ltd.
JieJie Microelectronics Co., Ltd.

© 2023 JieJie Microelectronics Co., Ltd. All rights reserved.



© 2023 JieJie Microelectronics Co., Ltd.