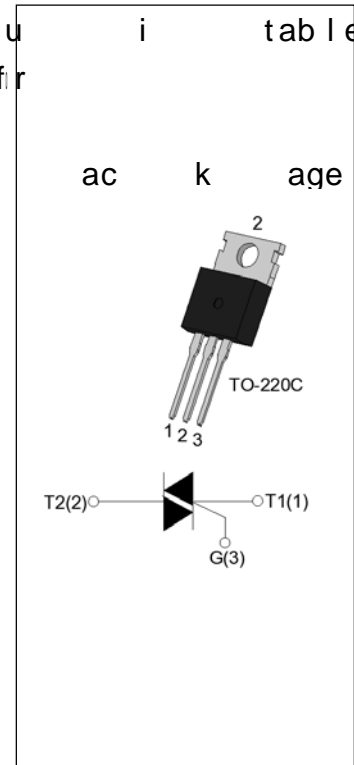


DESCRIPTION

The JST16C-1200TW triac is suitable for general AC switching applications. It is recommended for use in AC circuits through the package.

MAIN FEATURES

Symbol	Value	Unit
$I_{T(RS)}$	16	A
V_{DR} / V_{RR}	1200	V
I_{GT} / I	5/5/5	mA



ABSOLUTE MAXIMUM RATINGS

Symbol	Value	Unit
Storage junction temperature range	T_{stg}	$-55 \sim 150$
Operating junction temperature range	T_j	$-40 \sim 125$
Repetitive peak forward voltage (V_{DF})	V_{DF}	1200
Repetitive peak reverse voltage (V_{RR})	V_{RR}	1200
Non-repetitive peak forward current ($I_{T(RS)}$)	$I_{T(RS)}$	16
Non-repetitive peak forward current (full cycle, $T_j=125^\circ C$)	I_{TS}	160
Non-repetitive peak forward current (full cycle, $T_j=125^\circ C$)	I_{TS}	176
Peak value for fusing ($t_p=10ms, T_j=125^\circ C$)	I_{pt}	128
Critical rate of current change (I_{CR})	dI/dt	50
Gate current (I_G)	I_G	5
Average gate power dissipation (P_{AV})	P_{AV}	0.5
Gate power (P_G)	P_G	10

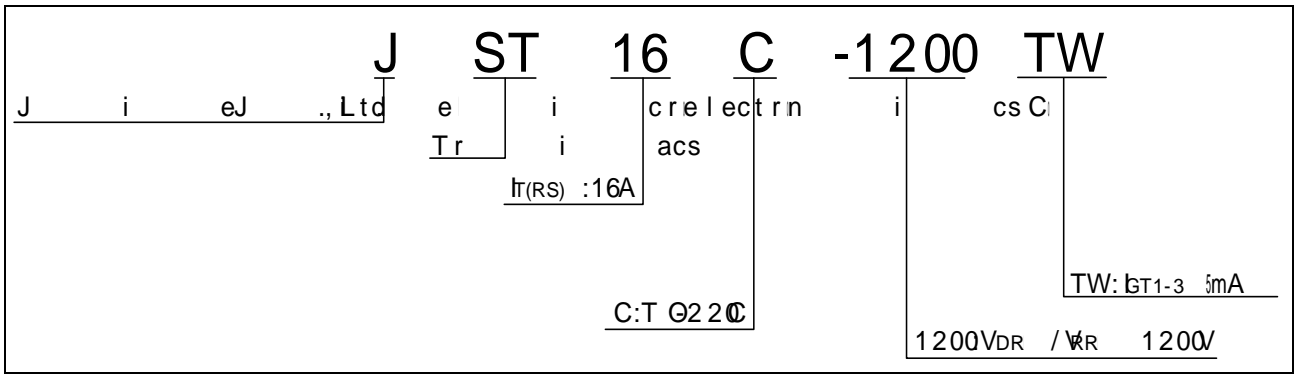


(T _j =25 ; nn - repet -sitate;FIG.7)	V _{pp}	3	k V
---	-----------------	---	-----

ELECTRICAL CHARACTERISTICS

Symb. I

ORDERING INFORMATION



MARKING

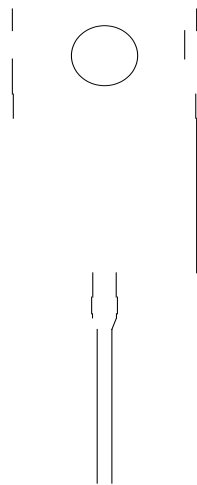
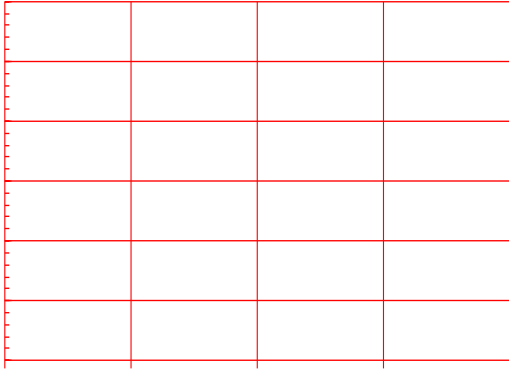
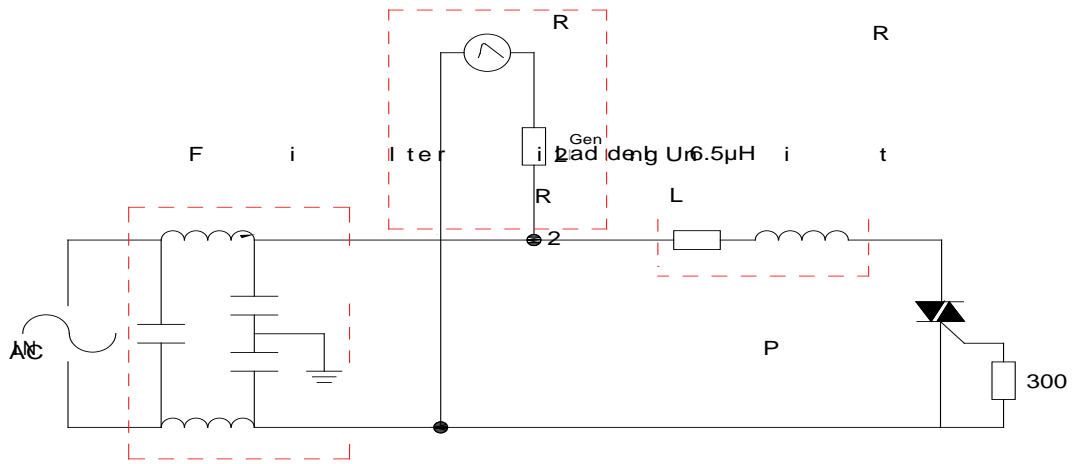


FIG.1 axial in-state current versus temperature

FIG.2 IRS in-state current versus temperature



8/20uF current source
PE-C0004-5 Standard ds



ORDERING INFORMATION

Order code	Voltage V_{DR} / V_R (V)	IGT(mA)		Base qty (pcs)	Delimede
		- -			
JST16C-1200TW	1200	5	T0220C	50	Tube

Document Revision History

Date	Revision	Changes
------	----------	---------

