



## JST06F-800C 6A TRIAC

Rev.A.1.1

The JST06F-800C triac is suitable for general purpose AC switching. It can be used as an ON/OFF function in applications such as heating regulation, induction motor starting circuits, for phase control operation in light dimmers, motor speed controllers. By using an external plastic package, JST06F-800C provides a rated insulation voltage of 2000 VRMS, complying with UL standards (File ref: E252906). Package TO-220F is RoHS compliant.

### Parameter



Peak pulse voltage  
(T<sub>j</sub>=25 °C)

9 kV      a      .0      d      M      3

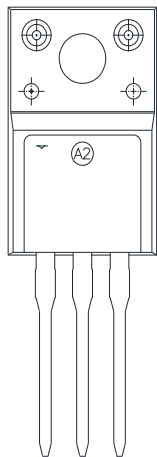
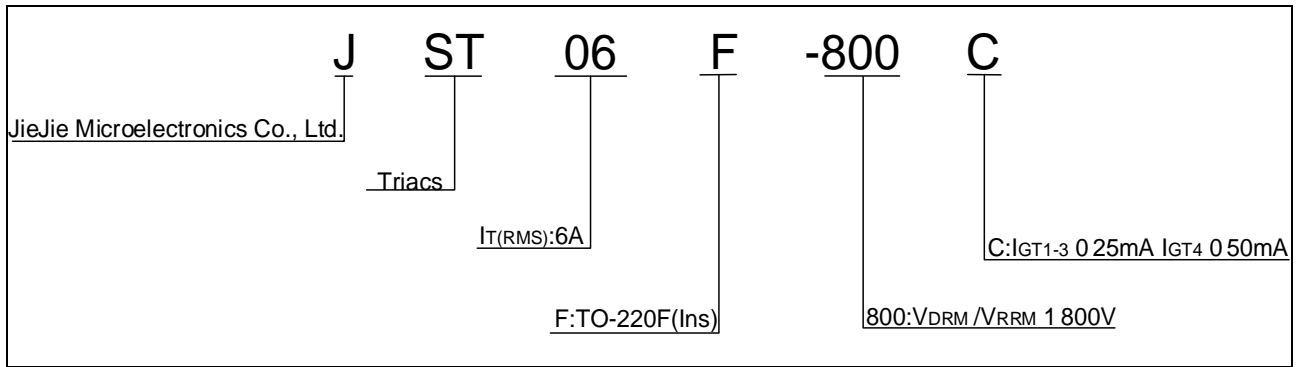


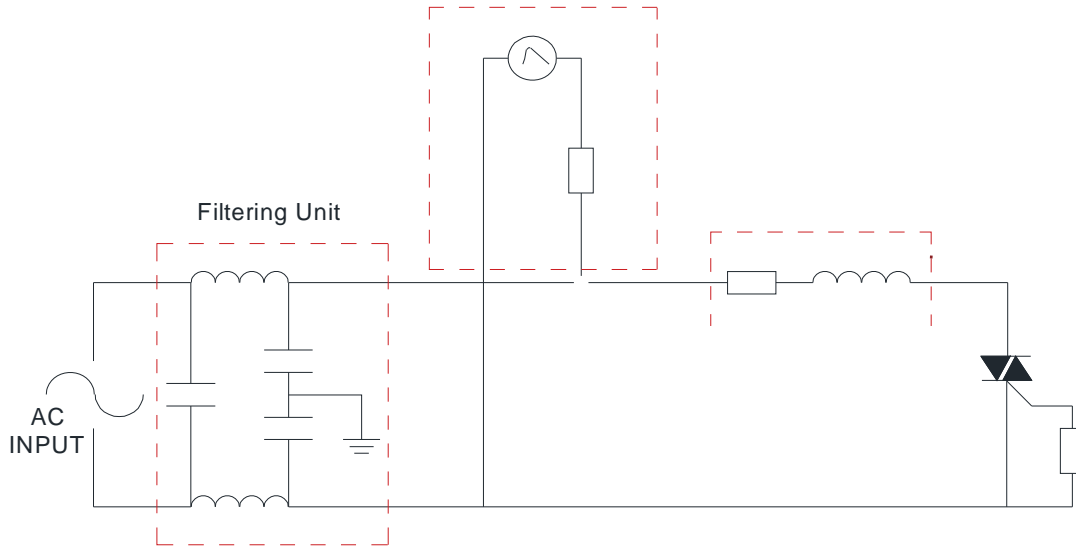


FIG.7 ÖTest circuit for inductive and resistive loads to IEC-61000-4-5 standards

IEC61000-4-5 Standards

Surge Generator

1.2/50 $\mu$ S voltage surge





| Order code  | Voltage<br>V <sub>DRM</sub> /V <sub>R<sub>RRM</sub></sub> (V) | IGT(mA) |    | Package      | Base qty.<br>(pcs) | Delivery mode |
|-------------|---------------------------------------------------------------|---------|----|--------------|--------------------|---------------|
|             |                                                               | -       | -  |              |                    |               |
| JST06F-800C | 800                                                           | 25      | 50 | TO-220F(Ins) | 50                 | Tube          |

**Document Revision History**

| Date         | Revision | Changes                        |
|--------------|----------|--------------------------------|
| Apr.14, 2023 | A.1.0    | Last updated                   |
| Oct.14, 2025 | A.1.1    | Revise PACKAGE MECHANICAL DATA |



Information furnished in this document is believed to be accurate and reliable. However, Jiangsu JieJie Microelectronics Co., Ltd assumes no responsibility for the consequences of use without consideration for such information nor use beyond it. Information mentioned in this document is subject to c  
um

ity for the