



## JST06F-600B 6A TRIAC

Rev.A.1.1

The JST06F-600B triac is suitable for general purpose AC switching. It can be used as an ON/OFF function in applications such as heating regulation, induction motor starting circuits, for phase control operation in light dimmers, motor speed controllers. By using an external plastic package, JST06F-600B provides a rated insulation voltage of 2000 VRMS, complying with UL standards (File ref: E252906). Package TO-220F is RoHS compliant.

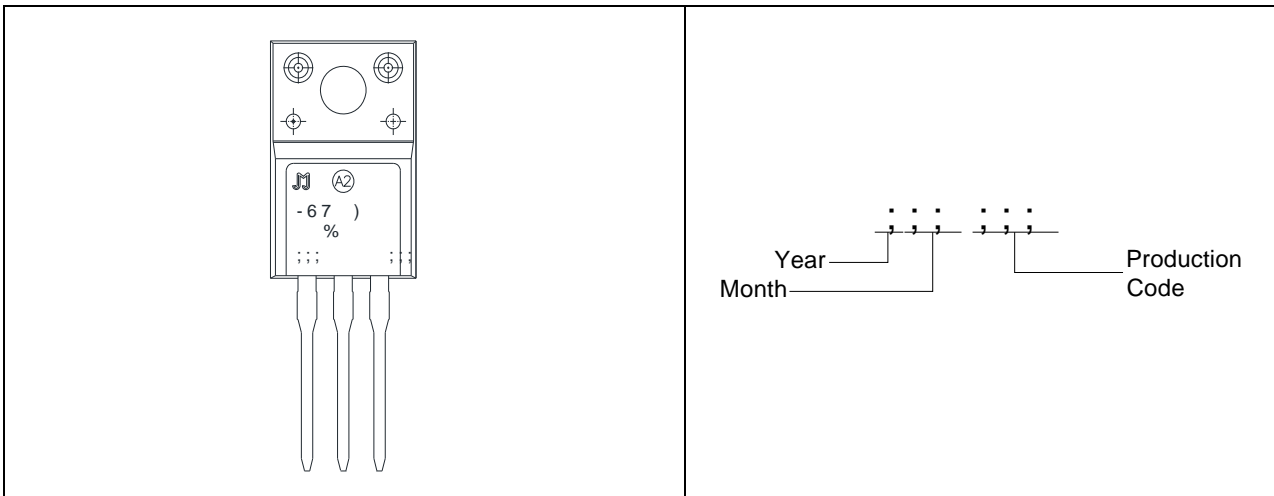
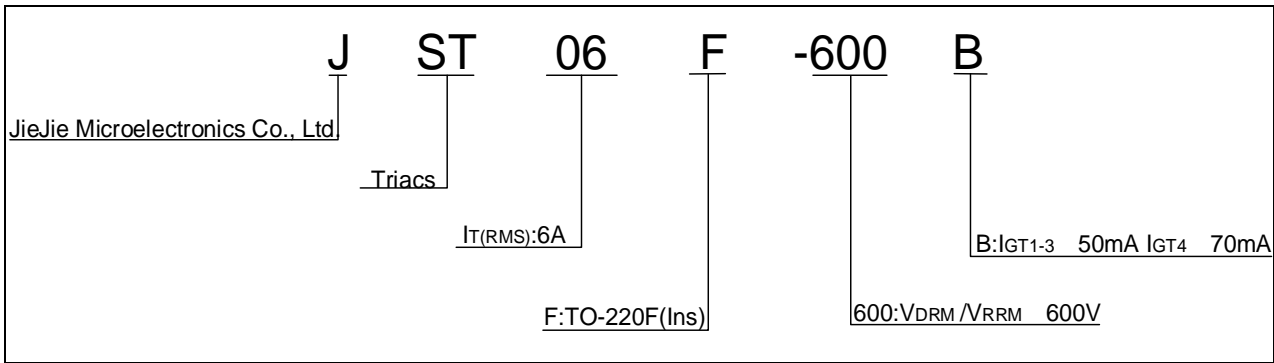
| Parameter  | Symbol    | Value   | Unit |
|--|-----------|---------|------|
| Storage junction temperature range                           | $T_{stg}$ | -40-150 |      |
| Operating junction temperature range                         | $T_j$     | -40-125 |      |
| Repetitive peak off-state voltage ( $T_j=25^\circ\text{C}$ ) | $V_{DRM}$ | 600     | V    |
| Repetitive peak reverse voltage ( $T_j=25^\circ\text{C}$ )   | $V_{RRM}$ | 600     | V    |

RMS on-state current ( $T_c \leq T_j$ )

|  |          |   |    |
|--|----------|---|----|
| Peak pulse voltage<br>( $T_j=25$ ; non-repetitive, off-state; FIG.7) | $V_{pp}$ | 4 | kV |
|--|----------|---|----|

( $T_j=25$  unless otherwise specified)

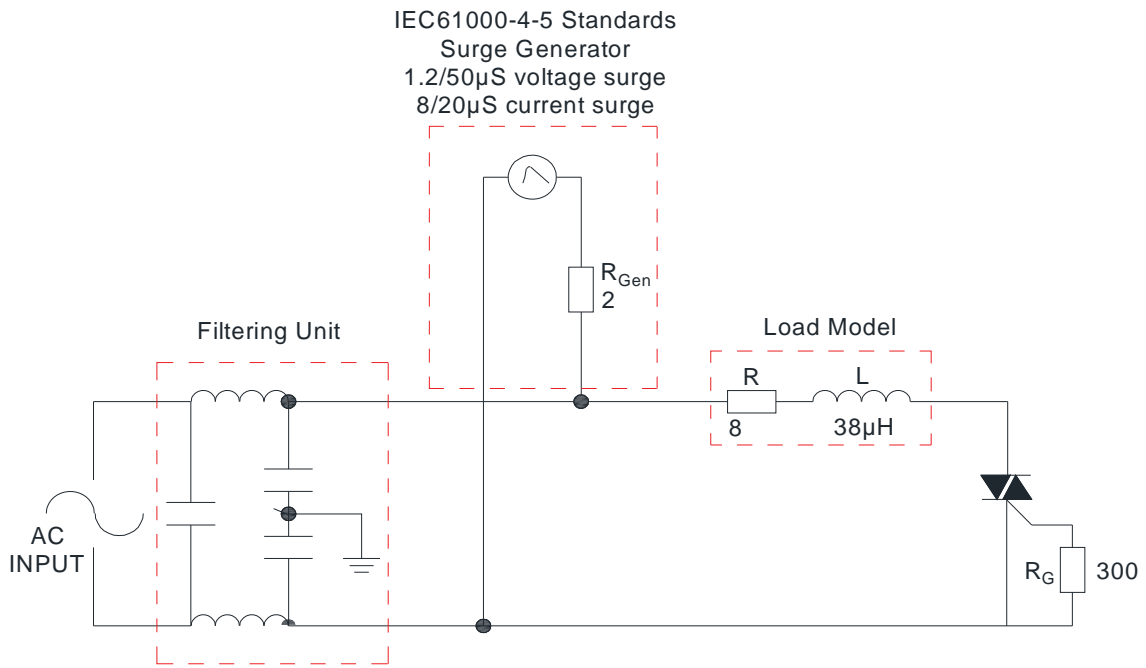
| Symbol   | Test Condition     | Quadrant | Value   | Unit |
|----------|--------------------|----------|---------|------|
| $I_{GT}$ | $V_D=12V$ $R_L=33$ | - -      | MAX. 50 | mA   |



**FIG.1:** Maximum power dissipation versus RMS on-state current

**FIG.2:** RMS on-state current versus case temperature

FIG.7 Test circuit for inductive and resistive loads to IEC-61000-4-5 standards



| Order code         | Voltage<br>$V_{DRM}/V_{RRM}$ (V) | IGT(mA)   |           | Package             | Base qty.<br>(pcs) | Delivery mode |
|--------------------|----------------------------------|-----------|-----------|---------------------|--------------------|---------------|
|                    |                                  | H- I- J   | K         |                     |                    |               |
| <b>JST06F-600B</b> | <b>600</b>                       | <b>50</b> | <b>70</b> | <b>TO-220F(Ins)</b> | <b>50</b>          | <b>Tube</b>   |

**Document Revision History**

| Date | Revision | Changes |
|------|----------|---------|
|------|----------|---------|



Information furnished in this document is bel á M

/

c