



JST06C-800B 6A TRIAC

Rev.A.1.1

DESCRIPTION:

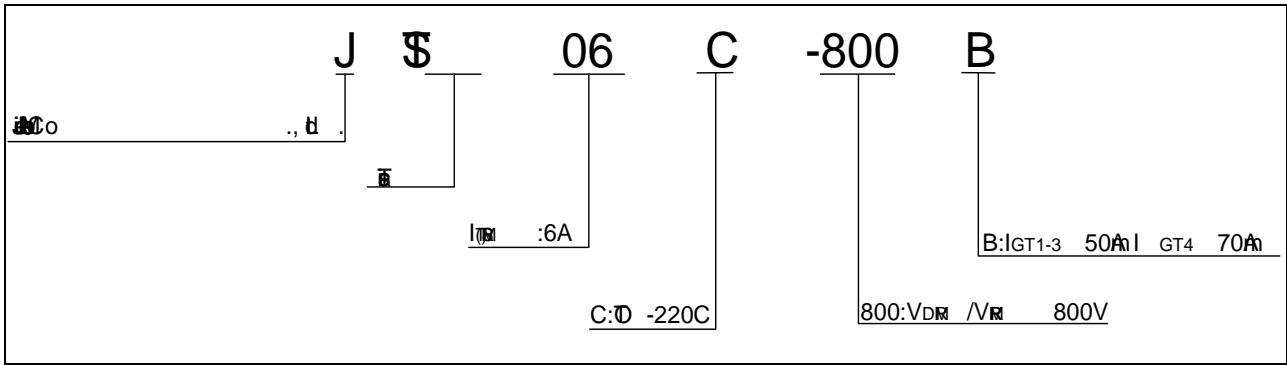
69 9.i-5800-5.5580.850.4871 (1005800)055A (06) (40)3105.00484802-4801M4(50) (15)

 ($T_j=25$; ρ - ρ - FIG.7)	V_p	4	μ
--	-------	---	-------


ELECTRICAL CHARACTERISTICS ($T_j=25$ )

Symbol	Test Condition	Quadrant	Value	Unit
I_{GT}	$V_D=12V$ $L=33$	- -	MAX . 50	A
			70	
V_{GT}		AL	MAX . 1	V
V_{GD}	$V_D=V_{DM}$ $T_j=125$ $R_L=3.3k$	AL	MIN . 0.2	V
I_L	$I_G=1.2I_{GT}$	- -	MAX . 70	A
			80	
I_H	$I_T=200A$		MAX . 60	A
t_{di}	$V_D=540V$ G_{GD} $T_j=125$		MIN . 500	V/μs
t_{dv}	$(dI/dt) = 2.7A/\mu T$ $T_j=125$		MIN . 10	V/μs
t_o	$I_G=80A$ $I_A=400A$ $I_R=40A$ $T_j=25$		TRF	

ORDERING INFORMATION



MARKING

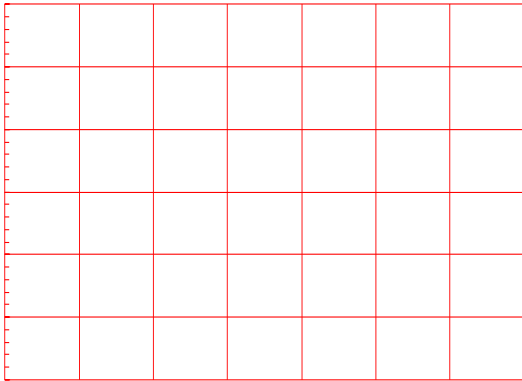
FIG.1: 

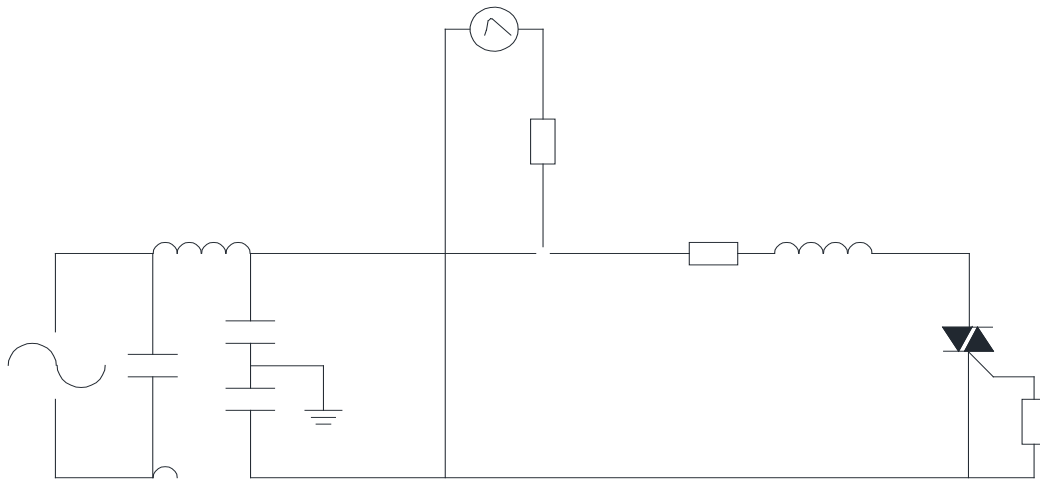
0 10

FIG.2: 

-100

10





ORDERING INFORMATION

Order code	Voltage V_{DRM}/V_{RRM} (V)	IGT(mA)		Package	Base qty. (pcs)	Delivery mode
		-	-			
JST06C-800B	800	50	70	TO-220C	50	Tube

Document Revision History

Da	R	Cg
----	---	----

