



Peak gate power	P_{GM}	2	W
Peak pulse voltage ($T_j=25$; non-repetitive, off-state; FIG.7)	V_{pp}	4	kV

ELECTRICAL CHARACTERISTICS



ORDERING INFORMATION

<u>J</u>	<u>ST</u>	<u>01</u>	<u>U</u>	<u>-1000</u>	<u>SW</u>	<u>-/</u>
JieJie Microelectronics Co., Ltd.	Triacs	$I_{T(RMS)}:1A$	U:TO-92	1000: V_{DRM}/V_{RRM}	SW:IGT1-3 10mA	Blank: Bulk Pack -TR: Tape & Reel

MARKING

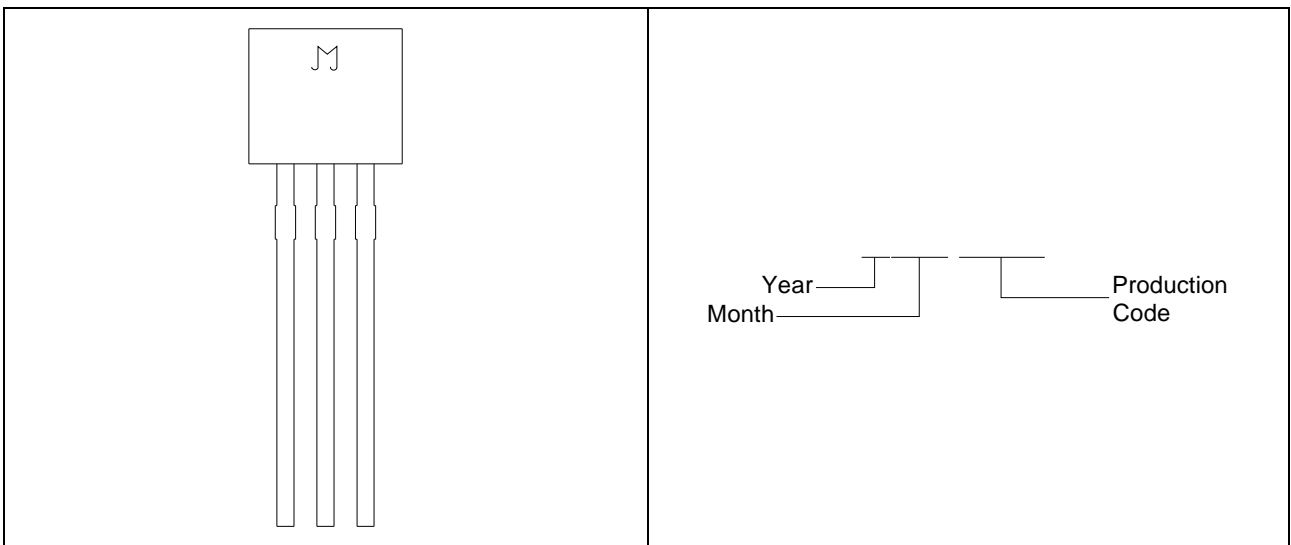
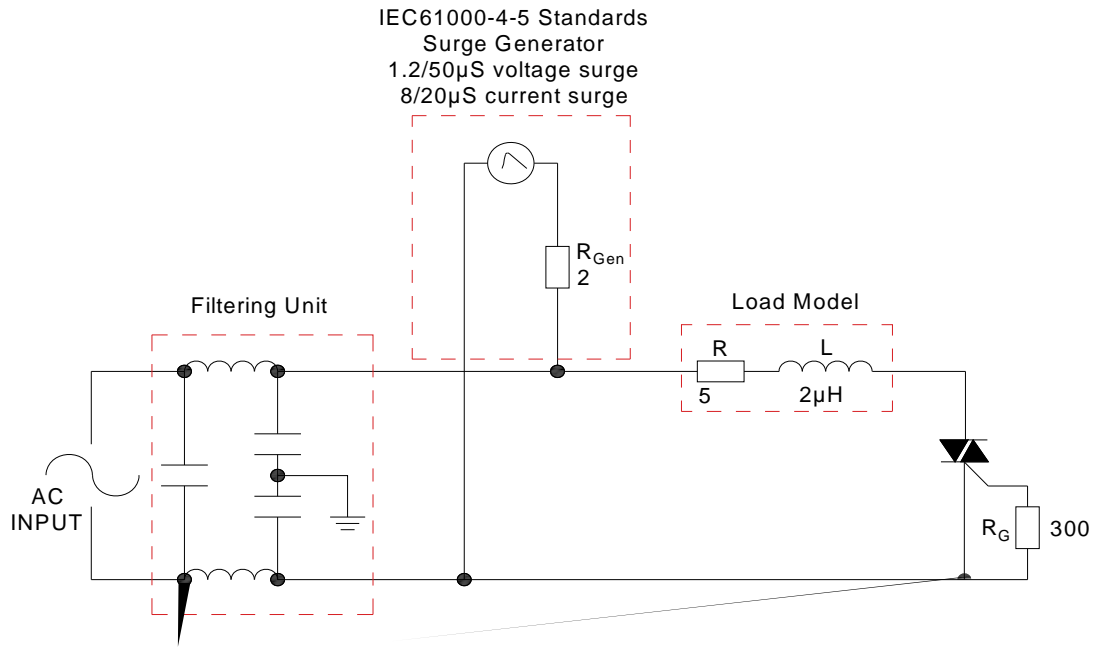






FIG.7 Test circuit for inductive and resistive loads to IEC-61000-4-5 standards



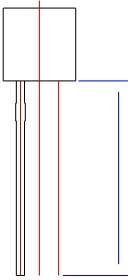


ORDERING INFORMATION

Date	Revision	Changes
Apr.10, 2023	A.1.0	Last updated
Apr.3, 2025	A.2.0	Renew PACKAGE MECHANICAL DATA
Sept.28, 2025	A.2.1	Revise PACKAGE MECHANICAL DATA



PACKAGE MECHANICAL DATA





DELIVERY MODE

TO-92	Bulk Pack	1,000	10,000	50,000

:
@HÅ1ö— ipb 63q <\$@HÅ0N0™ 4Ø @

W	17.50	18.00	19.00
W0	5.50	6.00	6.50
W1	8.50	9.00	9.50
W2			1.00
D0	3.80	4.00	4.20
H	-1.00	0	1.00
L1	2.50		
H	18.00	19.00	20.00

- 1

:4Ð @ 0



Information furnished in this document is believed to be accurate and reliable. However, Jiangsu JieJie Microelectronics Co., Ltd. assumes no responsibility for the consequences of use without consideration for such information nor use beyond it. Information mentioned in this document is subject to change without notice, apart from that when an agreement is signed, Jiangsu JieJie complies with the agreement.

Products and information provided in this document have no infringement of patents. Jiangsu JieJie assumes no responsibility for any infringement of other rights of third parties which may result from the use of such products and information. This document supersedes and replaces all info