

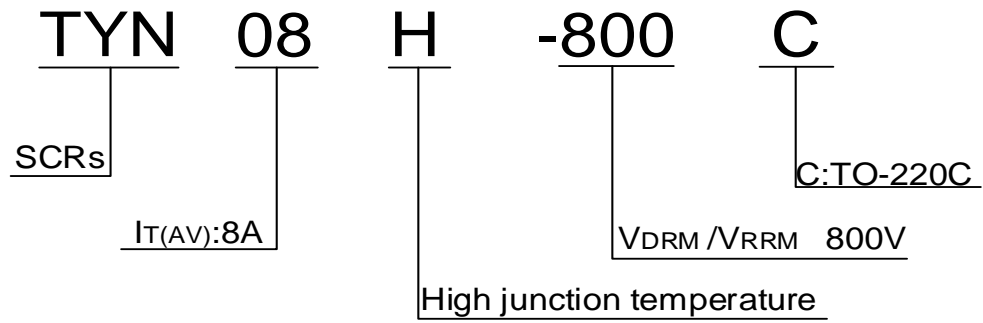


|  |             |     |    |
|--|-------------|-----|----|
| Peak gate current ( $t_p=20\mu s$ , $T_j=150$ )                    | $I_{GM}$    | 4   | A  |
| Average gate power dissipation ( $T_j=150$ )                       | $P_{G(AV)}$ | 1   | W  |
| Peak gate power  | $P_{GM}$    | 10  | W  |
| Peak pulse voltage<br>( $T_j=25$ ; non-repetitive,off-state;FIG.7) | $V_{pp}$    | 0.5 | kV |

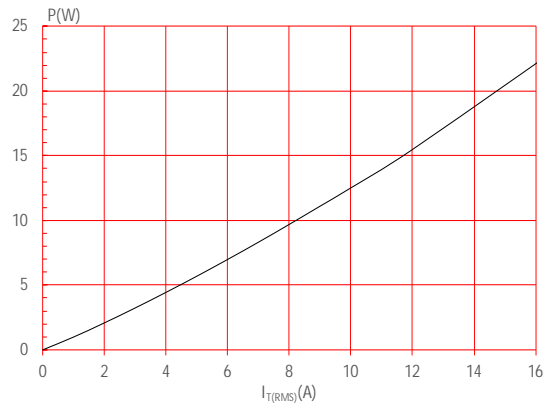
**ELECTRICAL CHARACTERISTICS** ( $T_j=25$  unless otherwise specified)

| Symbol | Test Condition | Value  |   | Unit |
|--------|----------------|--------|---|------|
|        |                | MIN.(T | ( |      |

**ORDERING INFORMATION**



**FIG.1:** Maximum power dissipation versus RMS on-state current



**FIG.2:** RMS on-state current versus case temperature

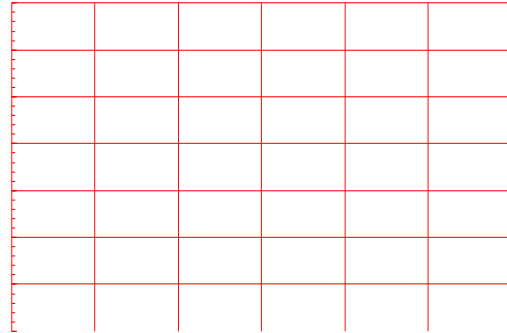
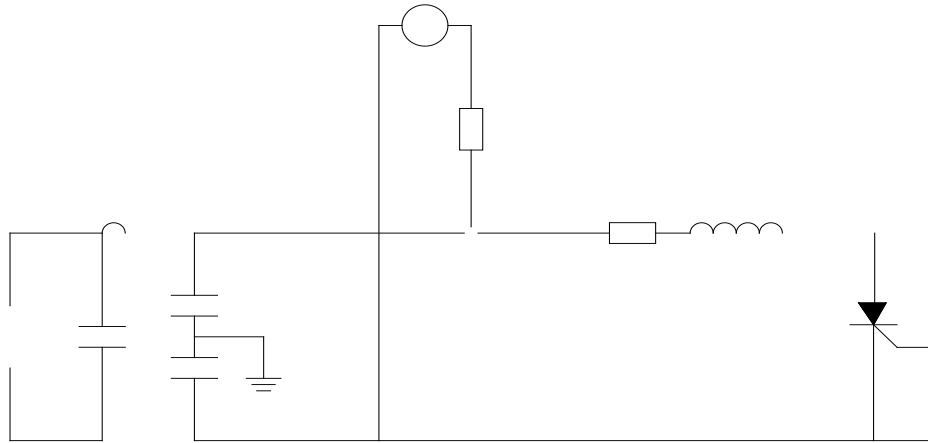


FIG.7 Test circuit for inductive and resistive loads to IEC-61000-4-5 standards.





**TYN08H-800C**

**JieJie M**

