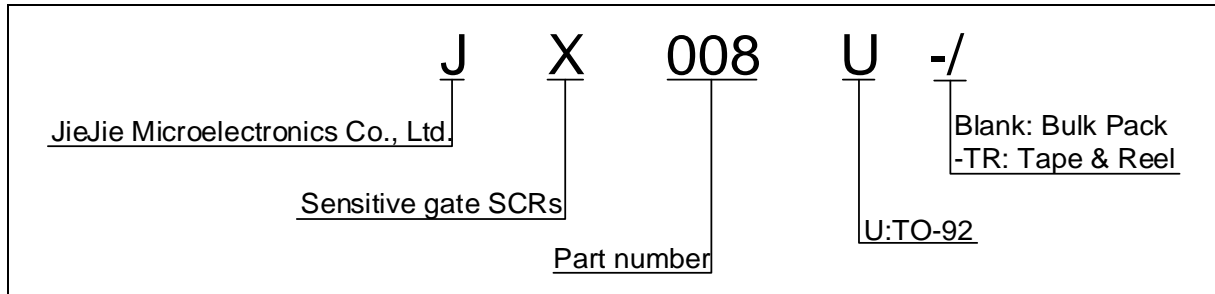




The JX008U SCR provides high  $dV/dt$  rate with strong resistance to electromagnetic interface. It is especially recommended for use on residual current circuit breaker, straight hair, igniter etc. Complying with UL standards (File ref: E252906). Package TO-92 is RoHS compliant.

Symbol	Value	Unit
$I_{T(RMS)}$	0.8	A
$V_{DRM} / V_{RRM}$	800	V
$I_{GT}$	200	$\mu A$







---

Maximum power dissipation versus RMS  
on-state current

RMS on-state current versus case  
temperature

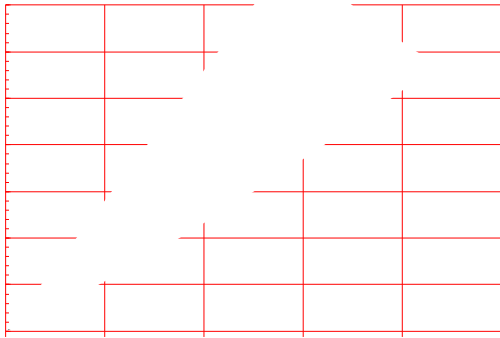
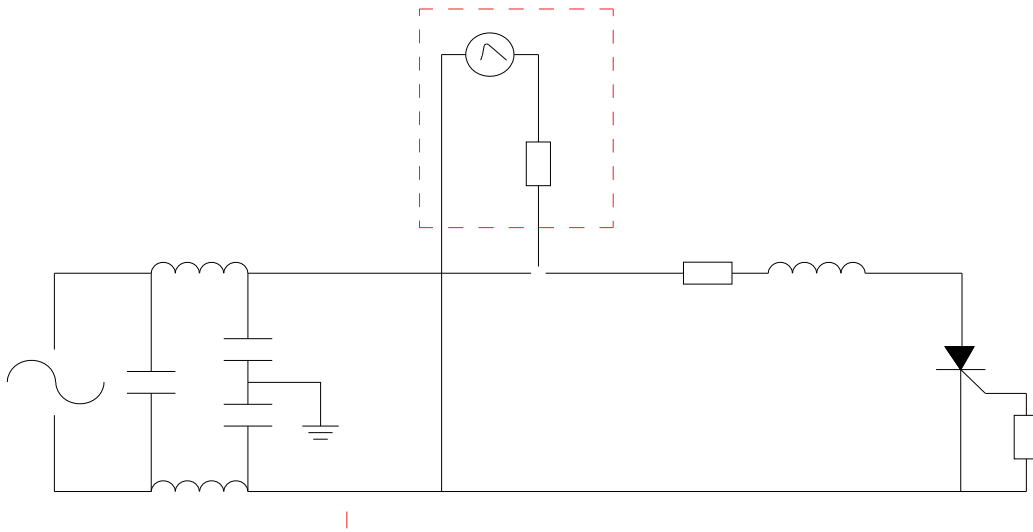




FIG.7 Test circuit for inductive and resistive loads to IEC-61000-4-5 standards.





---



Date







TEL