

$P_{G(AV)}$	$(T_j = 50^\circ\text{C})$	1	W
P_{GM}		20	W
V_p		0.5	V

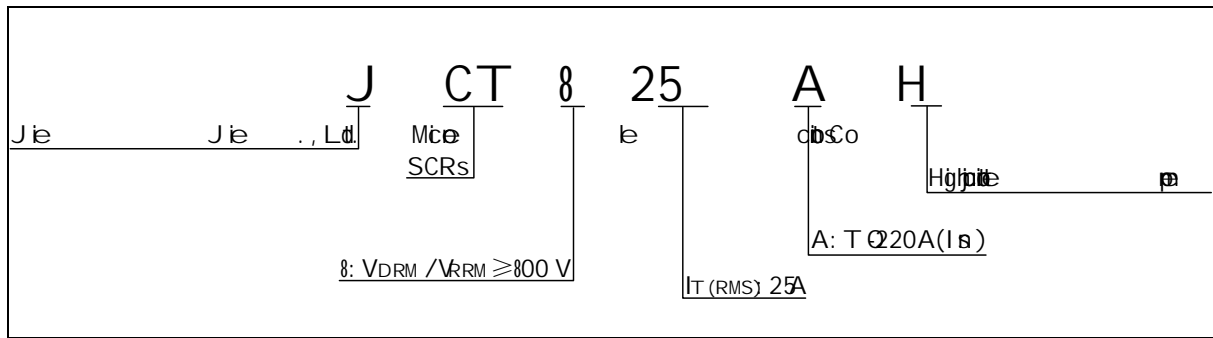
ELECTRICAL CHARACTERISTICS (T_j = 50°C)

Sym	Test Condition	Va			Unit
		MIN.	TYP.	MAX.	
I_{GT}	$V_D = \quad L =$	-	-	20	A
V_{GT}		-	-	1	V
V_{GD}	$V_D = \text{DRM } T_j = 50^\circ\text{C } R_L = \text{ k}$	0.2	-	-	V
I_L	$I_G = 1.2 I_{GT}$	-	-	70	A
I_H	$I_T = 500\text{mA}$	-	-	60	A
dV/dt	$V_D = 540\text{V } T_j = 125^\circ\text{C}$	800	-	-	V/ μs
	$V_D = 540\text{V } T_j = 150^\circ\text{C}$	500	-	-	
t_b	$I_G = 0\text{A } I_A = 0\text{A } I_R = \text{ A } T_j = \text{ }^\circ\text{C}$	-	2	-	μs
t_b		-	50	-	

STATIC CHARACTERISTICS

Sym	Test Condition	Va	V
V_{TM}	$I_{TM} = 50\text{A } t_p = 380 \mu\text{s } T_j = \text{ }^\circ\text{C}$	1.5	V
V_{TO}	$T_j = 50^\circ\text{C}$	0.7	V
R_D	$T_j = 50^\circ\text{C}$		

ORDERING INFORMATION



MARKING

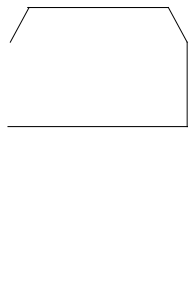


FIG.1: Main
RMS d -s e

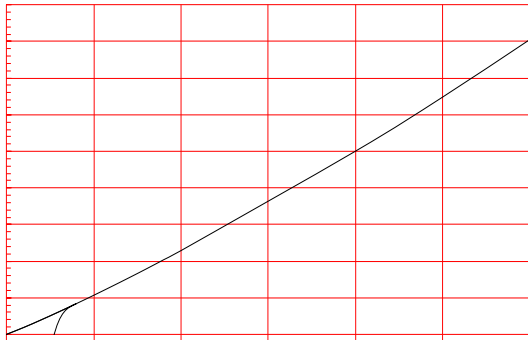
rd pte
c e

s
it

FIG.2: RMS d -s e
e p

c e
a e

it e

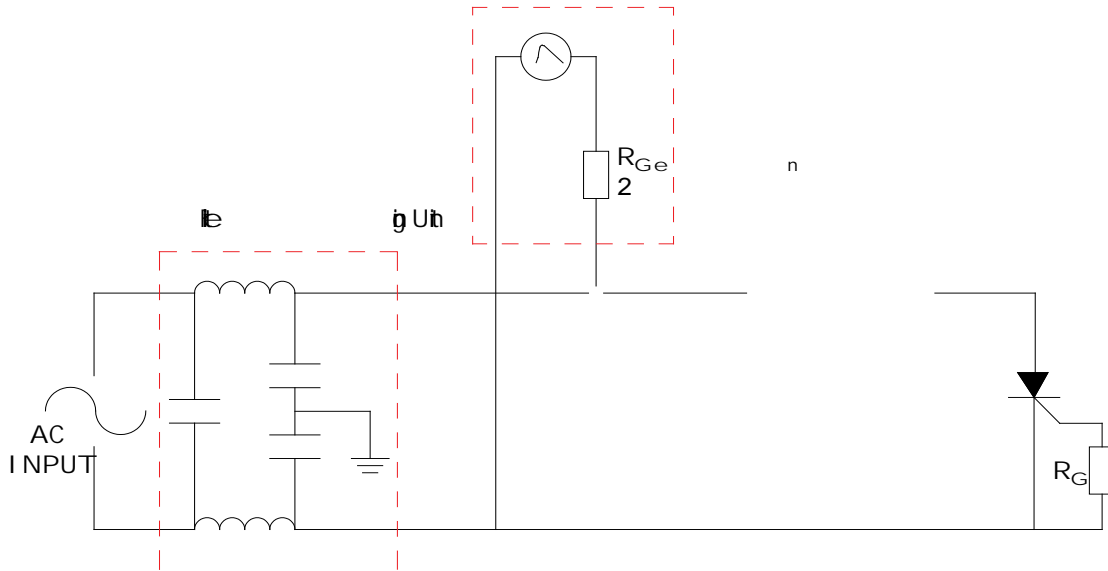


IEC61000-4-5 Sads

Sge Ge e ab

1.2/50 μ S voltage surge

8/20 μ S current surge




ORDERING INFORMATION

Order	V _{DRM} /V _{RRM} (V)	IGT(μs)	Package	Base (p)	Device
JCT825AH	800	20	TO-220A(18)	50	Tub

e

Do Revision History

Date	Revision	Changes
Jun.15, 2023	A.1. 0	Initial
Oct. 11, 2025	A.1. 1	Re PACKAGING MECHANICAL DATA

I have d... the e... d...
 How e... r... Ltd. as... Me...
 ce... ne... se...
 I have d... ct...
 the... range... e... d, J...
 Post... d... the...
 J... J... as...
 pie... ay... in... sh... ad... Th...
 dom... e... de... d...
... ge... e... d... Co, Ltd. ...
 Copyright © 2025 J... J... Ltd. All...