

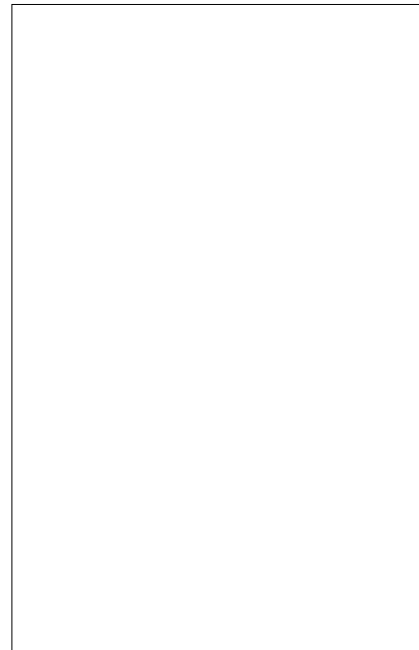


JCT640E 40A SCR

Rev.A.1.1

DESCRIPTION:

With high ability to withstand the shock loading of large current, JCT640E SCR provides high dV/dt rate with strong resistance to electromagnetic interference. It is especially recommended for use on solid state relay, motorcycle, power charger, T-tools etc. Package TO-263 is RoHS compliant.



MAIN FEATURES

Symbol	Value	Unit
--------	-------	------

Peak gate power	P_{GM}	20	W
	V_{pp}	0.5	kV

(unless otherwise specified)

Value			Unit
MIN.	TYP.	MAX.	

T GT

FIG.1: Maximum power dissipation versus RMS on-state current

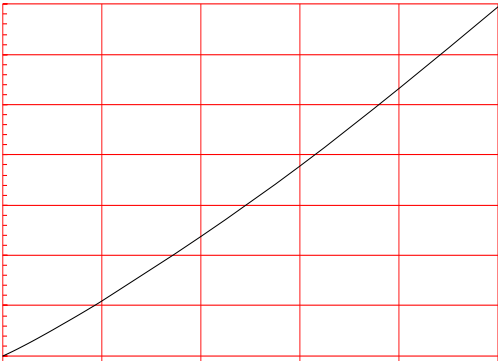


FIG.2: RMS on-state current versus case temperature

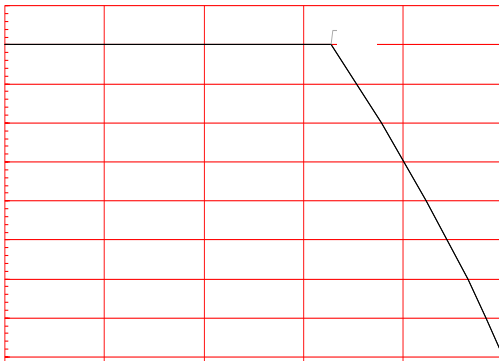


FIG.3: RMS on-state current versus ambient temperature (printed circuit board FR4,copper thickness : 35 μm)(full cycle)

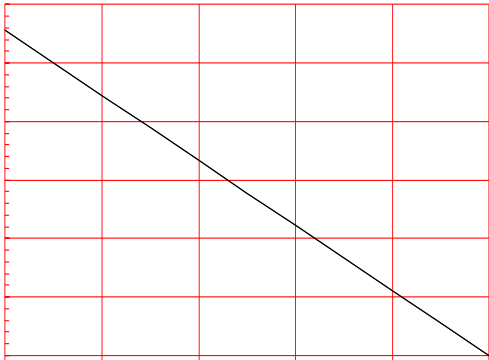


FIG.4: Surge peak on-state current versus number of cycles

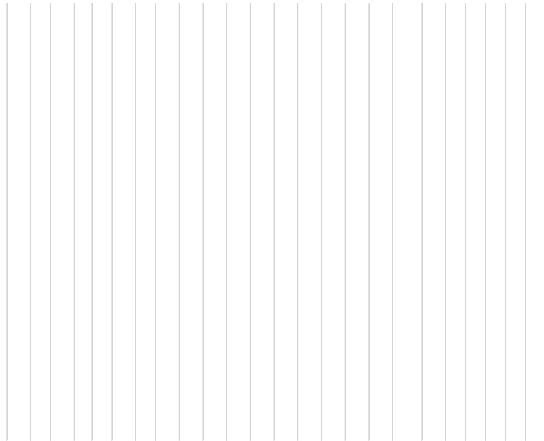
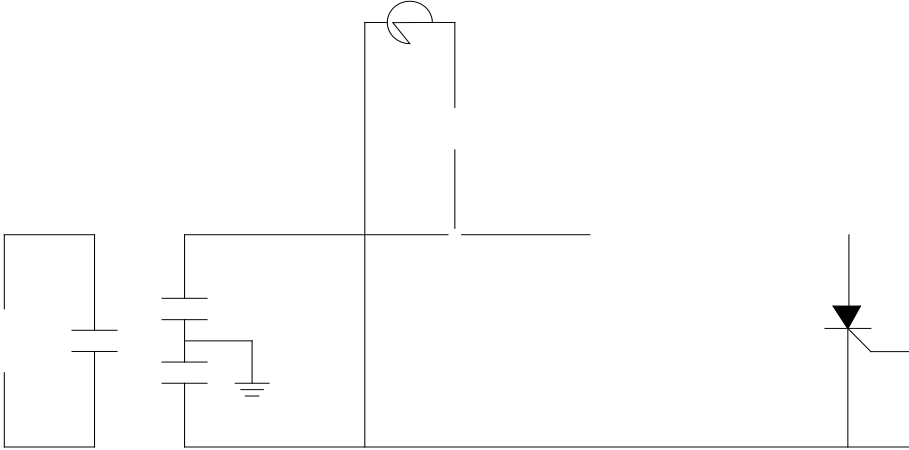


FIG.8 Test circuit for inductive and resistive loads to IEC-61000-4-5 standards.



JCT640E

JCT640E

JieJie M

JCT640E

JieJie Microelectronics

