

JIEJIE MICROELECTRONICS CO., LTD.

j

| | | |
|----|----|---|
| GM | 10 | W |
| pp | | |

ELECTRICAL CHARACTERISTICS (T_j=25 unless otherwise specified)

| Symbol | Test Condition | Value | Unit |
|-----------------|---|-------|------|
| I _{GT} | | | |
| I _{GT} | V _D =V _{DRM} R _G =3.3k | 0.2V | |
| I _{GT} | I _{GT} = 20 mA | | |
| ton | V _{DRM} = 50V Ope | | |
| toff | I _{GT} = 200mA T _j = 25 | | |

| | | | |
|------------------|--|----------|--|
| V _{TO} | I _{GT} = 23A p _{GT} = 80 | = 25.6 | |
| V _{TO} | Threshold voltage | = 10.57V | |
| R _D | | = 12.5 | |
| V _{DRM} | V _D =V _{BM} V _R =V _{RM} T = 25 | | |
| V _{RRM} | T | | |

THERMAL RESISTANCES

| Symbol | Parameter | Value | Unit |
|-----------------|-----------------------|-------|------|
| R _{jc} | junction to case (DC) | 4.5 | /W |

FIG.1: Maximum power dissipation versus RMS on-state current

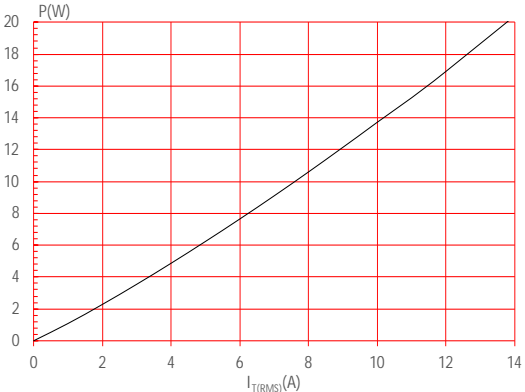


FIG.2: RMS on-state current versus case temperature

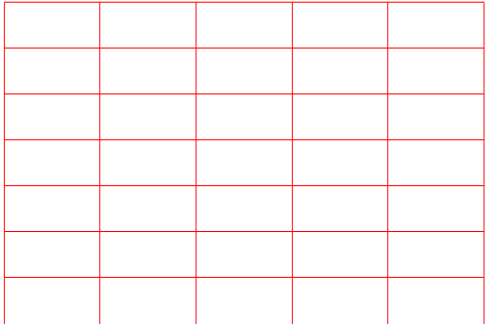


FIG.7: Relative variations of gate trigger current, holding current and latching current versus junction temperature

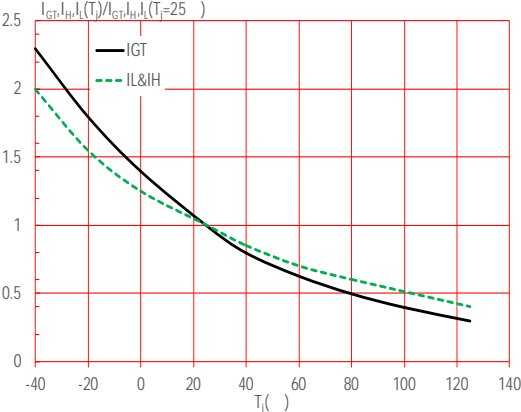
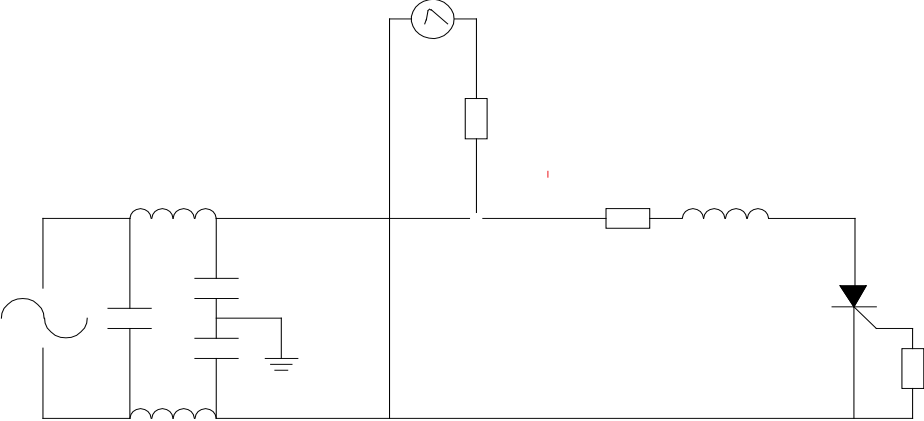


FIG.8: Test circuit for inductive and resistive loads to IEC-61000-4-5 standards.

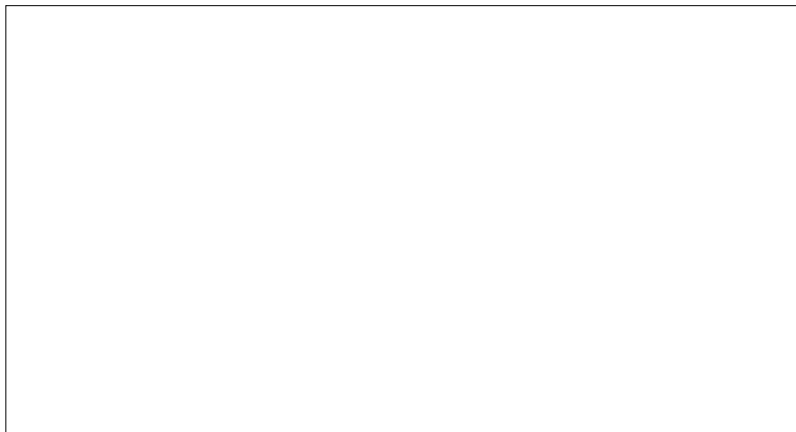


ORDERING INFORMATION

| Order code | Voltage V_{DRM}/V_{RRM} (V) | |
|------------|----------------------------------|--|
|------------|----------------------------------|--|

PACKAGE MECHANICAL DATA

| Ref. | Dimensions | | | | | |
|------|-------------|------|------|--------|------|-------|
| | Millimeters | | | Inches | | |
| | Min. | Typ. | Max. | Min. | Typ. | Max. |
| A | 2.10 | | 2.50 | 0.083 | | 0.098 |
| A2 | 0 | | 0.15 | 0 | | 0.006 |
| B | 0.66 | | 0.86 | 0.026 | | 0.034 |
| C | 0.40 | | 0.60 | 0.016 | | 0.024 |
| D | 5.90 | | 6.30 | 0.232 | | 0.248 |
| E | 6.40 | | 6.80 | 0.252 | | 0.268 |
| G | 4.47 | | | 0.053 | | 0.65 |
| G1 | 2.18 | | 2.38 | 0.086 | | 0.094 |
| L | | | | | | |
| L2 | | | | 0.053 | | 0.065 |



DELIVERY MODE

