

\$ & - 7 8 \$ 7 5 , \$ &

5HY \$

^ Z/Wd/KEW

7KH \$&-7 8 WULDF LV VXLWDEOH IRU JHQHUDO SXUSRVH
 \$& VZLWFKLQJ ,W FDQ EH XVHG DV DQ 21 2)) IXQFWLRQ LQ
 DSSOLFDWLRQV VXFK DV KHDWLQJ UHJXODWLRQ LQGXFWRU
 PRWRU VWDUWUOLJKDWHFRQWURO RSHUDWLRQ LQ
 OLJKW GLPPHUV FRWRUJOSHUHG FKH \$&-7 8
 HPEHGV D 796 VWUXFWXUH WR DEVRUE WKH LQGXFWLYH WX
 HQHUJ\ VXFK DV WKRVH GHVFULEHG LQ WKH ,(&
 VWDQGDUGV 3DFNDJH 72 LV 5R+6 FRPSOLDQW

D /E & dhZ ^

6\PERO	9DOXH	8QLW
,7 506		
9.50 9.50		9
,*7		P\$

\$

^K>hd D y/DhD Z d/E'^

3DUDPHWHU	6\PERO	9DOXH	8QL
6WRUDJH MXSHFWLRQW HLPD QJHVWJ		7	
2SHUDWLQJWHKSHWLDWQXUH UDQJH		7	
5HSHWLWLYH SHDN RII VWDWHYROWDJH		7	9
5HSHWLWLYH SHDN WHYHUWHYROWDJH		7	9
506 RQ VWDWHFXUUHQW	7 ,7 506		
1RQ UHSHWLWLYH VXUJH SHDN RQ VWDWHFXUUHQW			\$
IXOO F\FOH M W			
1RQ UHSHWLWLYH VXUJH SHDN RQ VWDWHFXUUHQW	7.60		\$
IXOO F\FOHV W7			
,W YDOXH IRU PXVLQJ W	,W		\$ V
&ULWLFDO BDWGRWDWHFXUUHQW	G, GW		\$ V
; h,*7 l +]M 7			
3HDN JDWH FXUHQW W	,*0		\$
\$YHUDJH JDWH SRZHU GLVVLSDWLRQ	7		:
3HDN JDWH SRZHU	3*0		:

3HDN SXOVH YROWDJH 7M QRQ UHSHWLWLYH RII VWDWH), *		
--	--	--

> dZ/ > , Z d Z^d/ XQOHVV RWKHUZLVH VSHFLILHG

6\PERO	7HVW &RQGLWLRQ	4XDGUDQW	9DOXH
,7	9 9 5	0\$;	P\$
9*7		0\$;	9
9*	9 9.50 7M 5/ N	0, 1	9
/	, * ;7	0\$;	P\$
,+	,7 P\$	0\$;	P\$
G9 GW	99 *DWH 2SHQ 7	0, 1	9 V
G, GW	F G9 GW F 9 V	70, 1	\$ PV
WQ	, P\$ \$, P\$ 5, P\$	7 < 3	V
W ₁₁	7M		
9&/	&/ P,\$s WP V	0, 1	9

^d d/ , Z d Z/^d/ ^

6\PERO	3DUDPHWHU	9DOXH 0\$;	8QLW
970	70 \$sW V M		
972	7KUHVKROG YRQWDJH	7	
5'	'\QDPLF UHVLVMDQFH	7	P
,50	9 9.50 \$ 9550	7M	
,550		7M	

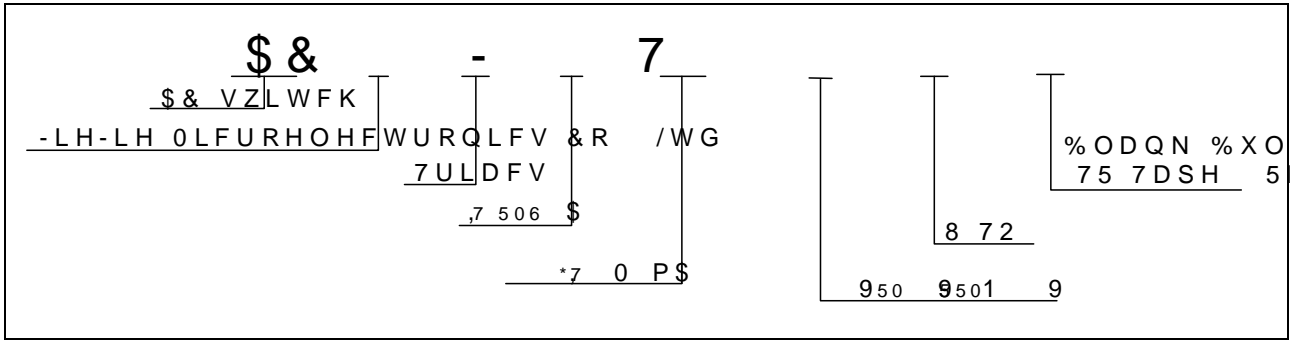
d, ZD > Z ^/^d E ^

6\PERO	3DUDPHWHU	9DOXH	8QLW
5WK M F	MXQFWLRQ WR FDVH \$&		:
5WK M D	MXQFWLRQ WR DPELHQW \$&		:

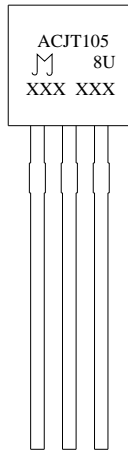
\$ & - 7 8

- LH - LH 0LFURHOHFWURQL

KZ Z/E' /E&KZD d/KE



D Z</E'

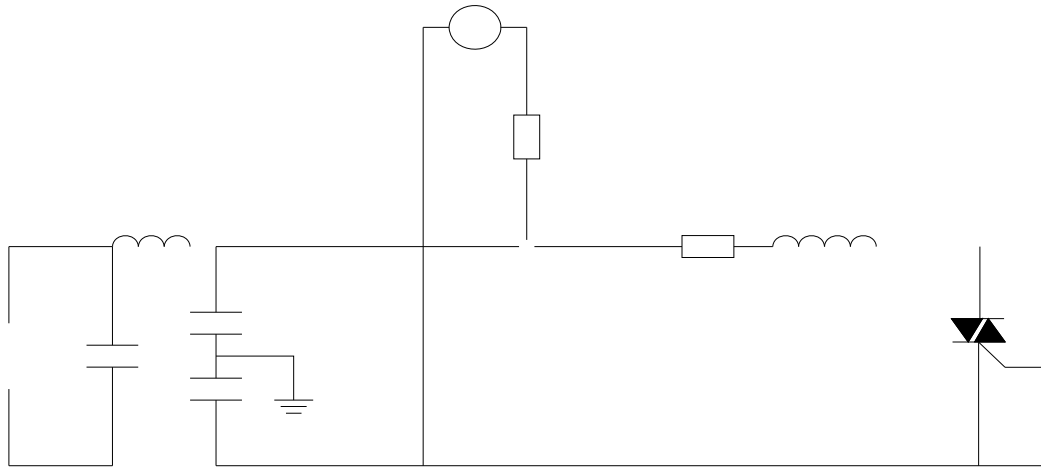


XXX XXX

< HDU

ORQWK

), * Ö7HVW FLUFXLW IRU LQGXFWLYH DQG UMDQGDUGW OF



\$ & - 7 8

- LH - LH 0LFURHOHFWURQL

W < ' D , E / > d



..

-

> /s Zz DK

3\$&.\$*(287/,1(%'\$* 3&6	,11(5 %2; 3&6	&\$5721 %2; 3&6
72	%XON 3DFN			



+

,QIRUPDWLRQ IXUQXPHQW ILQ WKOLHGRHG WR EH DFFXUDWH I
 -LDQJVV -LH-LH 0LRRHOWHG WDJROLFWV QLRV UHRUS ROKHLE ERQVHT
 RI XVH ZLWKRXW FRQVLGHUDWLRQ IRG MWFKQIRUPDWLRQ
 LQ WKLV GRFXPHQW LQJXZELMHFRXWRQRWLFH DSDUW IURP V
 VLJQH -LDQJVSOLHIVLZILFRKPWKH DJUHHPHQW
 3URGXFVV DQG LQIRURDWKLRQ GRURXFLGHG KDYH QR LQIULQJ
 -LDQJVV -LH-LH DVVXIPHLOQR\URVSRQWIRQKHQJWIPJKWWRIWH
 SDUWLHV ZKLFK PDKXVXROIW XURKPSWB BFWRQDQKILQGRFXPH
 VXSHUVHGHV DQG UHSODFHV DOO LQIRUPDWLRQ SUHYLRXV
 LV D UHJLVWHUHGDQJDXGLHDUNRUF-URHOWHFWURQLFV & I
 &RS\ULJKW < -LDQJVRHHEMURQUEYK&RV UHWGHUSHG