



JOCT354Xt-M4 Series

Rev.A.1.0

^ Z/Wd/KEW

7KH SURGXFWV DUHF RUSDOHULWWRUDRSSODR/WLF 623
 SDFNDJH 7KH GHYLF\$HFR\$PEILOHVDDQIG HPLWWLQJ
 GLRGHDV WKH HPLWWHU ZKLFK LV RSDWLFDOO\ FRXSOHG WR
 SKRWRWUDQVLVWRUKIGHURIEKWWUFRSOVBQDU GRXEOH PROG
 VWUXFWXUH WKHGHPRFWWSURDYEGHNLWRODWLRQ IHDWXU
 7KH SURGXFWV DUHVZILGHFQ\PRVGHGSRQZHU VXSSOLHV
 SURJUDPPDEOHFRXQWHUKRODGHDSOLDQFHV DQG RIILFH
 HTXLSPHQW

D /E & dhZ ^

+LJK LVRODWLRQ 9506
 2SHUDWLQJ WHUPSOJUDWXUWR f &
 5R+6 5(\$&+ &RPSOLDQFH
 +%0 + \$ 00 &'0 &
 &4& DSSURYHG
 9'(DSSURYHG
 8/ DSSURYHG

^K>hd D y/DhD Z 7H/ESAUDWXUH f &

Parameter	Symbol	Value	Unit
,QSXW)RUZDUG &XUUHQW ,)		
	3HDN)RUZDUG &XUUHQW ,)	7	\$
	5HYHUVH 9ROWDJH 95		

6WRUDJH 7HPSHUDWXUH	7 _{VWJ}	a	
6ROGHULQJ 7HPSHUDWXUH	7 _{VRO}		

EKd îî • %μo • U îî, Ì (œ ‹μ v Ç
 EKd î (}œ íu]vμš U ZX, XAđì • òì9

> dZ/ > , Z d Z 7AØ/SAUDWXUH f &

Parameter		Symbol	Condition	Min.	Typ.	Max.	Unit
, QSXW)RUZDUG 9ROWDJH) “ 9P\$,			9
	7HUPLQDO & DSDFL _W WDQFH	9 1 0+] &					S)
2XWSXW	&ROOHFWRU (PLWWHU 9&(9 GDUN FXUUHQW ,&(2						Q\$
	&ROOHFWRU (PLWWHU ,& P\$ EUHDNGRZQ YROWDJH %9(2						9
	(PLWWHU &ROOHFWRU (P\$ EUHDNGRZQ YROWDJH %9&2						9
7UDQVIHU &KDUDFWH	&XUUHQW WUDQVHU UDWL) “ P\$ 9&(9					
	&ROOHFWRU (PLWWHU) “ P\$ 6DWXUDWLQR 9ROWDJH, & P\$	9&(9 9&(9					9
	,VRODWLQR UHVLVWDQFH	'& 9 a 5 +		5			
)ORDWLQJ & DSDFL _W WDQFH	9 1 0+] &					S)
	HULVWLFV	9&(9					
	&XW RII)UHTXHQF\	& P\$ 5/ G %					N+]
	5LVH 7LPH	W	9&(9				V
)DOO 7LPH	W	& P\$				
5HVSQRVH 7LPH	W _Q W _I	5/					

EKd Z vl d o } (μœœ v š~dœu %• (œœš μZœš J) î ñ £ •

CTR Rank	Min. (%)	Max. (%)	Test Condition
3) , “ P\$ &9 9
) , “ P\$ &9 9
4) , “ P\$ &9 9
) , “ P\$ &9 9

Z OE š OE]•š] • μOEÀ •

FIG.1: 0D[\$OORZDEOH /(')RUZDUG \$PELHQW 7HPSHUDWXUH

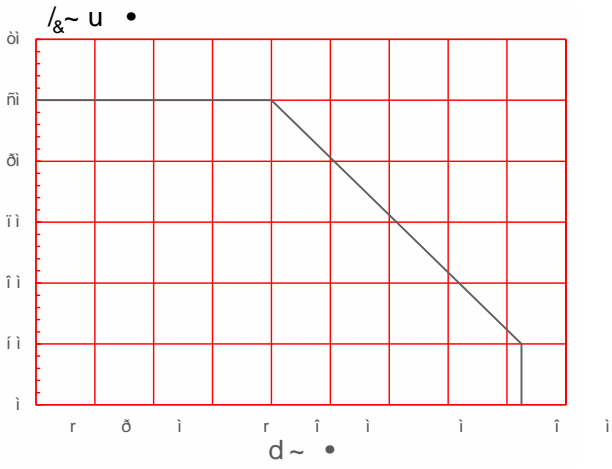


FIG.2: U&RQW HFWRU 3RZHU 'LVVLSWLF 7HPSHUDWXUH

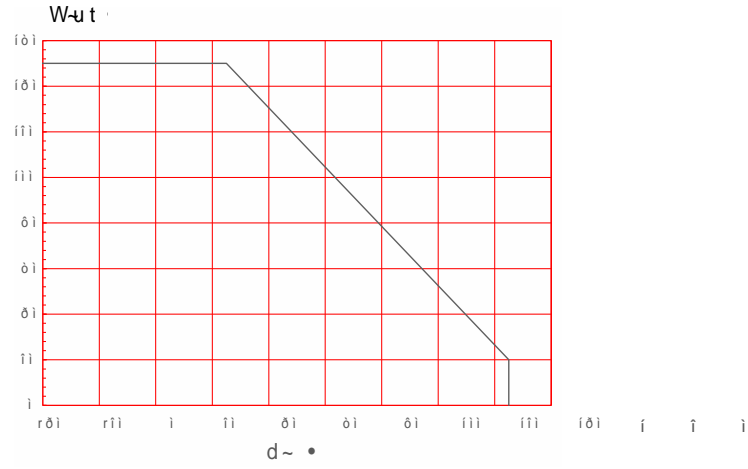


FIG.3:)RUZDUG &XUUHQW YV)RUZDUG

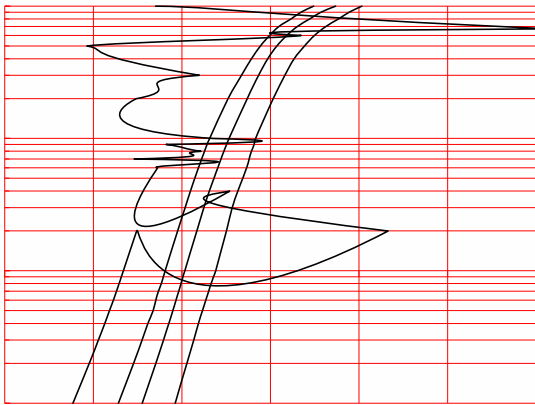


FIG.4: RQW DDLJHG &ROOHFWRU 'DU YV \$PELHQW 7HPSHUDWXUH

FIG.7: 1RUPDOLJHG & XUHQW 7UDQV FIG.8: 51RWLPD YJHG & ROOHFWRU HPL 9ROWDJH YV \$PELHQW 7HPSHUDV

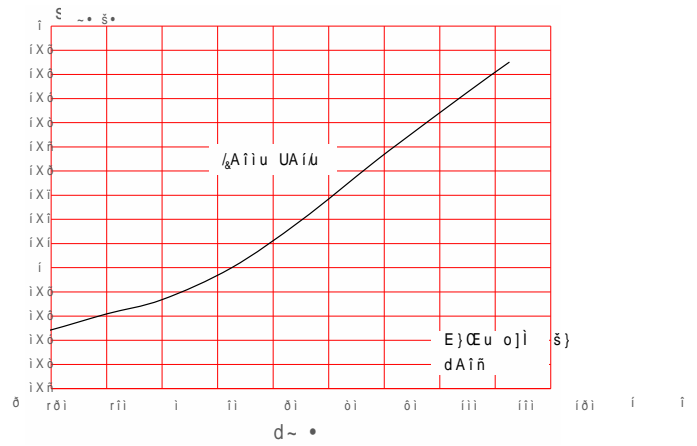
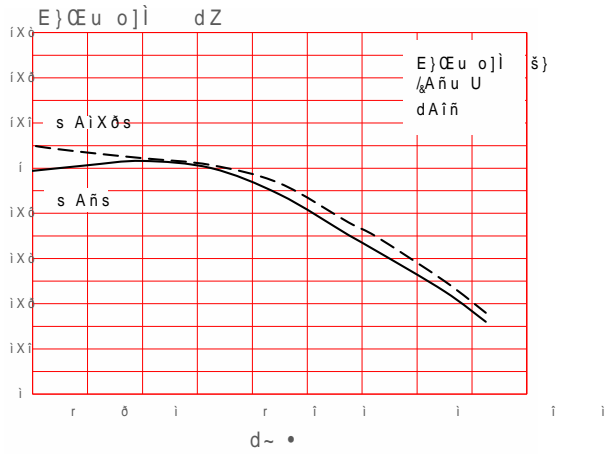
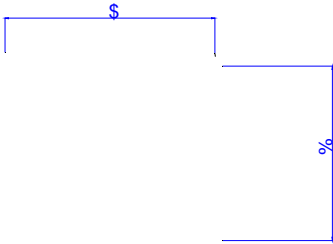


FIG.9: 5HVSQRVH 7LPH YV /RDG 5HV FIG.10: Q BHTXHQF\ 5HVSQRVH



W I P]u v•]}v ~hv]šW uu•



ZZ/ Z d W ^W /&/ d/κ]E^ }v]uu μνo •••ššž ĆÁ]•

Option None

⊖

1RWH

5HIORZ VROGHULQJ LV UHFRPPHQGHG/ DWRZKH QHPSHWDWWDQW DQW DQW
\$YRLG GLUHFV FRQVHDVSRPHQZDQWWRUDFRU H[FHHGLQJ LWV PD
VWRUDJH WHPSHUDWXUH

\$SSOLFDWLRQ RKHUSRYXENRQLVLSOHGDDWHG WHPSHUDWXUHV ,QV
VFHQDULRV DQHPSVOLGRWRHFFHHG 1

(QVXUH WKH FRPSRQHQW KDV FRROHG SURPHQVHQWZLXPSWHDXHQL
PDQXIDFWXULQJ VWHSV

7KH FRPSRQHQW KDV BQKHODUZKHQVWDQGHGKFRQGLWLRQV

5HFRPPHQG VWRUDJH 7HPS a f&

5HFRPPHQG VWRUDJH KXPLGLW\

06/ OHYHO 06/

,QIRUPDWLRQ IXUQXFKHQ/ LQ WKOVLHGMB DQGEUHDQFLDXLDDH +R
-LDQJVVX -LH-LH 0LRRHOWHFDWRVQLFHVQLRVUHRUSRQVLEFRQVHT
RI XVH ZLWKRXW FRQVLGHUDWLRQ IRG MWFKQIQIRUPDWLRQ
LQ WKLV GRFXPHQVLDQJYXZLWHFRXWRQRWLFH DSDUW IURP V
VLJQHGH -LDQJVVXOLHVLZILFRKPWKH DJUHHPHQW

3URGXFWV DQG LQIRUPDWLRQ SURYLGHGJHQWVVRGFSFXPH
-LDQJVVX -LH-LH DVVXIPHLVQW\URVSDQVLQIULQJHPHQW RI RW
ZKLFK PD\ UHVXOW IURP WKH XVH RI VXLK SURFXPHQW DQGS HL
DQG UHSODFHV DOO LQIRUPDWLRQ SUHYLRXVO\ VXSSOLHG



LV D UHJLVWHUHG DQJXGHLHDUN RUF-URHOWHFWURQLFV & R
&RS\ULJKW -LDQJVVX -LH-LH QLVRRHOWHFWURQLFV UHVH