

	Output Power Dissipation	P _O	300	mW
Total Power Dissipation		P _{tot}	375	mW
Isolation Voltage		V _{iso}	5000	Vrms
Operating Temperature		T _{opr}	-40~110	
Junction Temperature		T _j	125	
Storage Temperature		T _{stg}	-40~125	
Soldering Temperature		T _{sol}	260	

NOTE1

NOTE2

ELECTRICAL CHARACTERISTICS (Temperature=25°C)

Parameter		Symbol	Condition	Min.	Typ.	Max.	Unit
Input	Forward Voltage	V _F	I _F =10mA	-	1.2	1.5	V
	Reverse Current	I _R	V _R =6V	-	-	1	μA
	Action Current	I _{F(ON)}	I _L =I _{L(MAX)}	-	0.9	3	mA
	Reset Current	I _{F(OFF)}	I _L =I _{L(MAX)}	0.4	0.8	-	mA
Output	On Resistance	JOCMA39C	I _F =5mA I _L =Max. Within 1s on time	-	-	0.1	
		JOCMA38C		-	-	0.3	
		JOCMA57C		-	-	0.4	
		JOCMA66C		-	-	2.5	
		JOCMA74C		-	-	25	
		JOCMA83C		-	-	35	
	Off State Leakage Current	I _{Leak}	I _F =0mA, V _L =Max.	-	-	1	μA
Isolation Resistance	R _{ISO}						

Switching
Characteristics

ORDERING INFORMATION

<p>J</p> <p>JieJie Microelectronics Co., Ltd.</p>	<p>OC</p> <p>Opto Coupler</p>	<p>M</p> <p>MOS</p>	<p>A</p> <p>A:1NO</p> <p>3:V_O 60V 5:V_O 100V 6:V_O 200V 7:V_O 400V 8:V_O 600V</p>	<p>3</p>	<p>8</p>	<p>C</p> <p>C:I_{FT} 3mA</p> <p>9:I_O:2A 8:I_O:1A 7:I_O:0.5A 6:I_O:0.3A 4:I_O:0.1A 3:I_O:0.05A</p>	<p>-D6P/S</p> <p>P:DIP6 S:SMD6</p>	<p>/</p> <p>S:T3 L:T4</p>
--	--------------------------------------	----------------------------	---	-----------------	-----------------	--	--	---

MARKING

Characteristics Curves

FIG.1: LED Dropout Voltage vs. Ambient Temperature

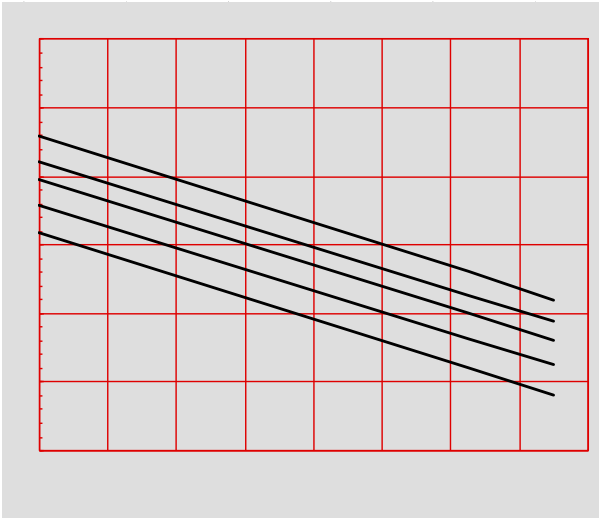


FIG.2: Output Current vs. Output Voltage

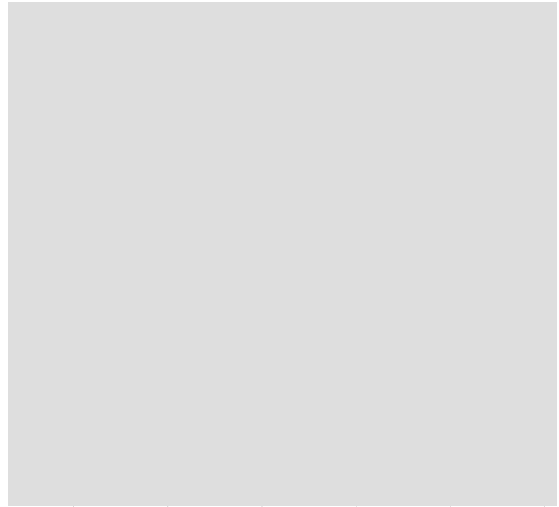


FIG.7: Turn On Time vs. Ambient Temperature

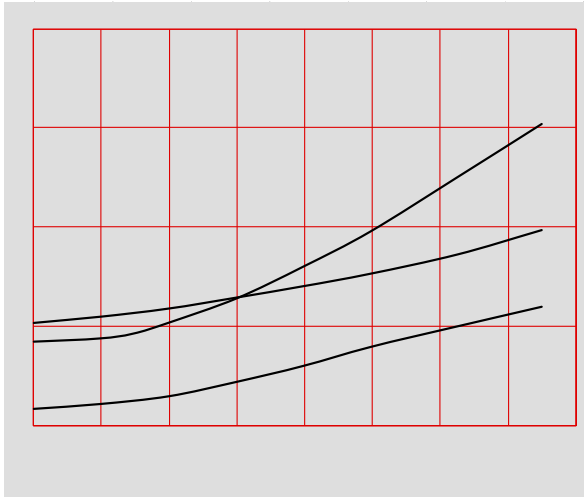
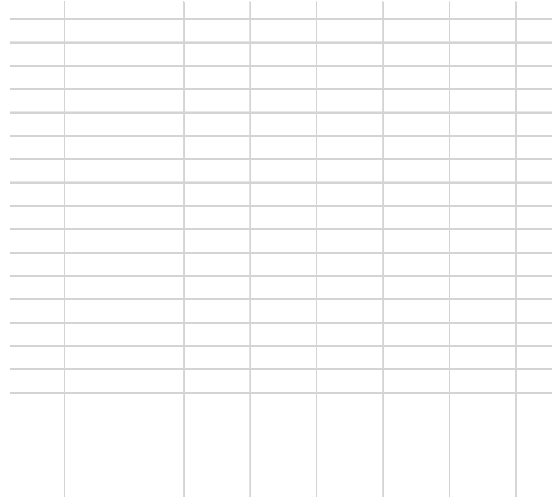
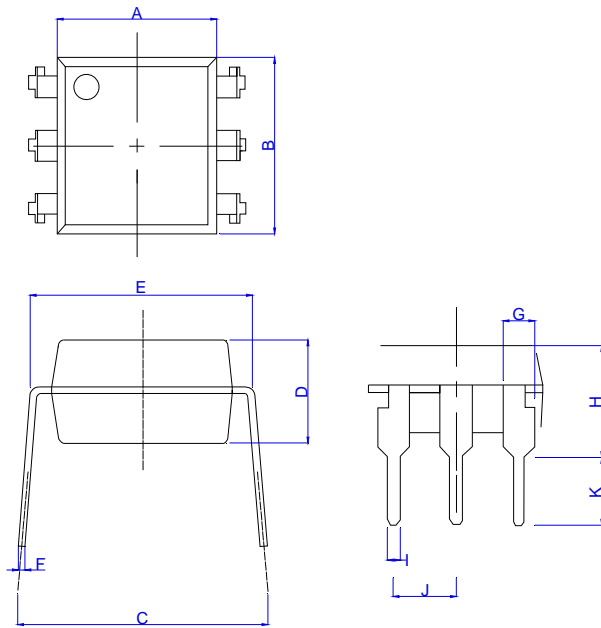


FIG.8: Turn Off Time vs. Ambient Temperature



Package Dimension (Unit: mm)

Standard DIP Type:

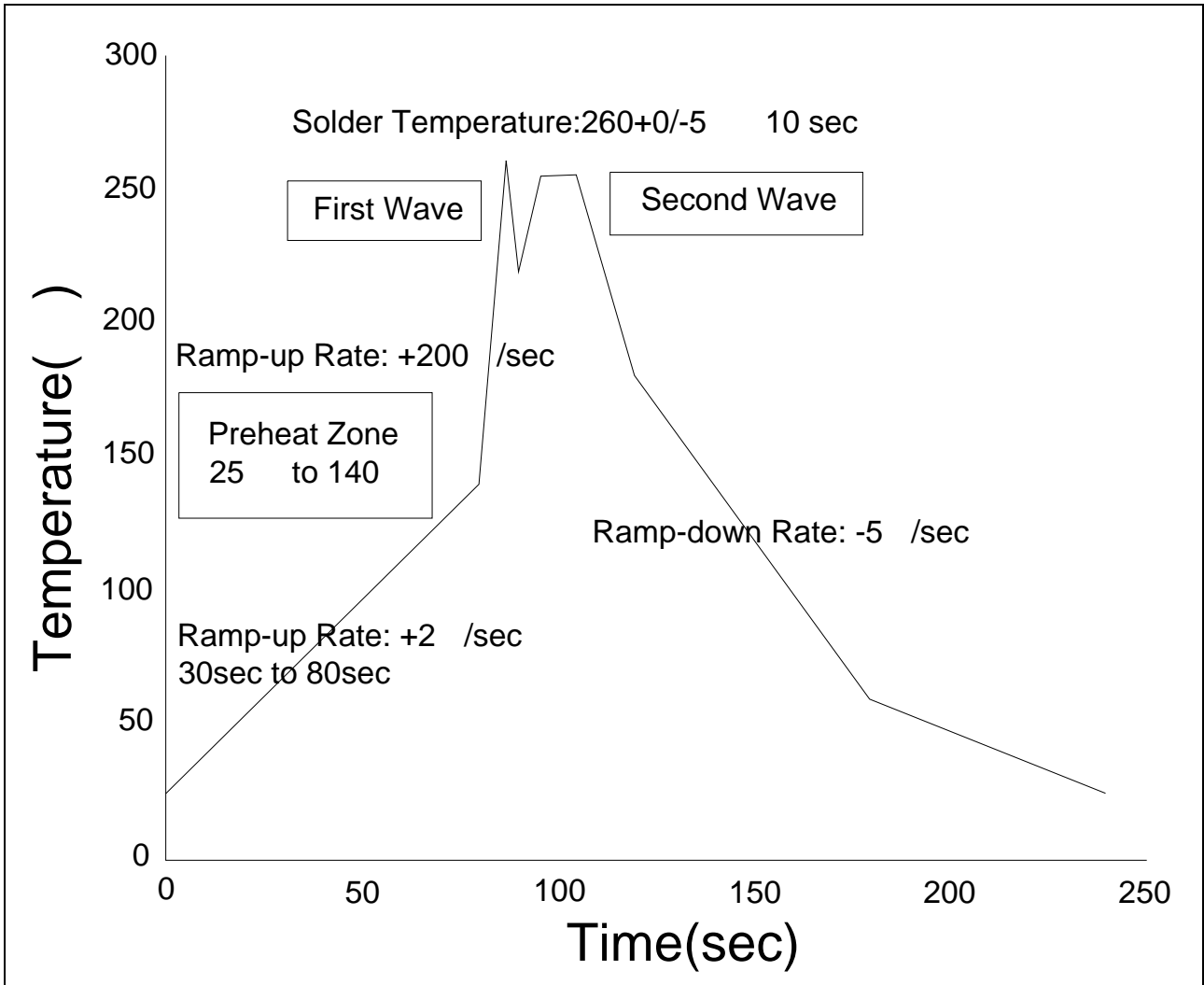


Ref.	Dimensions					
	Millimeters			Inches		
	Min.	Typ.	Max.	Min.	Typ.	Max.
A	6.20		6.60	0.244		0.260
B	6.92		7.32	0.272		0.288
C	7.15		8.95	0.281		0.352
D	3.20		3.60	0.126		0.142
E	7.32		7.92	0.288		0.312
F						
G	1.15		1.35	0.045		0.053
H	3.90		4.50	0.154		0.177
I						
J						
K						

CARRIER TAPE SPECIFICATIONS (Dimensions in mm unless otherwise stated)

Ref.	Dimensions			
	Millimeters			Inches
	Min.	Typ.	Max.	Min.

WAVE SOLDERING



HAND SOLDERING BY SOLDERING IRON	
Soldering Temperature	360 ± 5
Soldering Time	3s max.

Note:

1. Reflow soldering is recommended at the temperatures and times shown, no more than three times.
2. Avoid direct contact between the epoxy body and any tools or surfaces exceeding its maximum storage temperature.
3. Application of pressure on the epoxy body is prohibited at elevated temperatures. In specific scenarios, any applied force must not exceed 2.5N.
4. Ensure the component has cooled to ambient temperature before proceeding with any subsequent manufacturing steps.
5. The component has a shelf life of one year when stored under standard conditions.
6. Recommend storage Temp.: 0~40°C;
Recommend storage humidity: <60%;
MSL level: MSL 1

Information furnished in this document is believed to be accurate and reliable. However, Jiangsu JieJie Microelectronics Co., Ltd. does not assume any responsibility for errors or omissions, or for damages of any kind arising from the use of the information contained herein.