



JOC355

Rev.A.1.0

DESCRIPTION:

The JOC355 combines an AlGaAs infrared emitting diode as the emitter which is optically coupled to a silicon planar darlington phototransistor detector in a plastic SOP4 package. With the robust coplanar double mold structure, JOC355 provides the most stable isolation feature. The products are widely used in sequence controller telephone/fax, system appliances, measuring instrument and programmable logic controller.

MAIN FEATURES

- Current transfer ratio CTR: 600%-7500% @ $I_F=1mA$ ,  $V_{CE}=2V$
- High isolation voltage between input and output ( $V_{iso}=3,750V_{rms}$ )
- Operating temperature up to +110°C
- Collector-Emitter voltage  $BV_{CEO}$  40V
- CQC approved
- VDE approved
- UL approved
- The products comply with REACH and HF

ABSOLUTE MAXIMUM RATINGS (Temperature=25°C)

Parameter		Symbol	Value	Unit
Input	Forward Current	$I_F$	60	mA
	Peak Forward Current	$I_{FP}$	1	A
	Reverse Voltage	$V_R$	6	V
	Power Dissipation	$P_D$	100	mW
	Collector-emitter Voltage	$V_{CEO}$	40	V

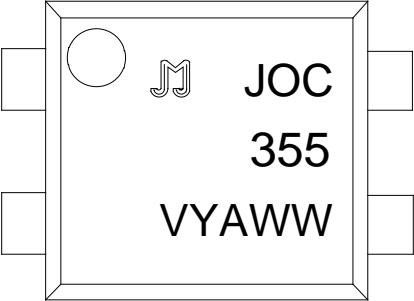
Output

# JOC355

Isolation Voltage	$V_{iso}$	3750	Vrms
Operating Temperature	$T_{opr}$	-55~+110	
Storage Temperature	$T_{stg}$	-55~+	

ORDERING AND MARKING INFORMATION

MARKING INFORMATION





td.

tfd

Test Circuits

FIG.11: Test Circuits of Response Time

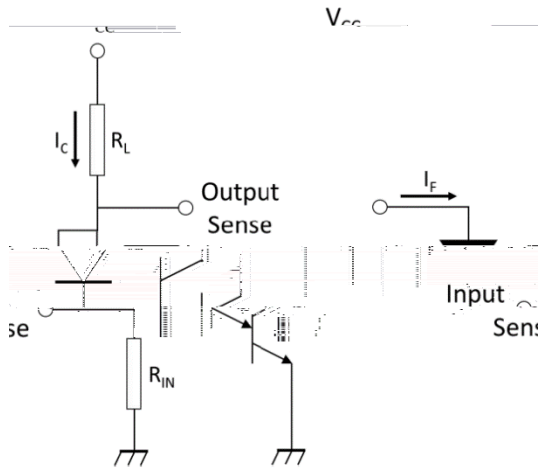


FIG.12: Curves of Response Time

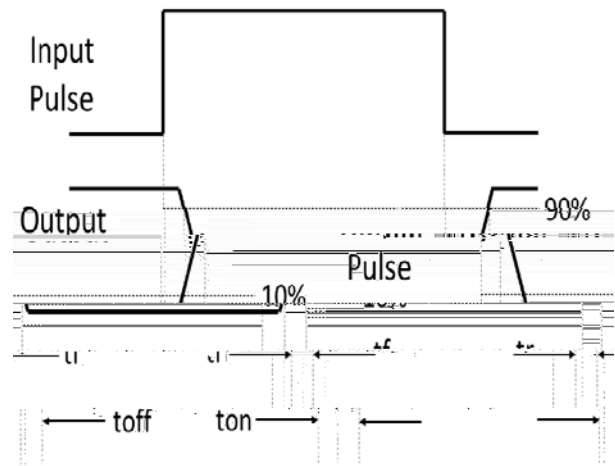
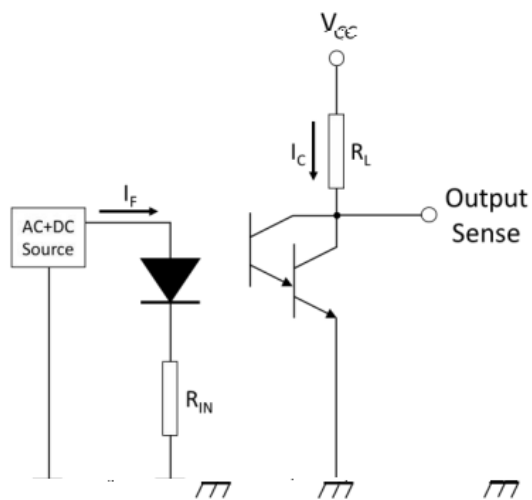
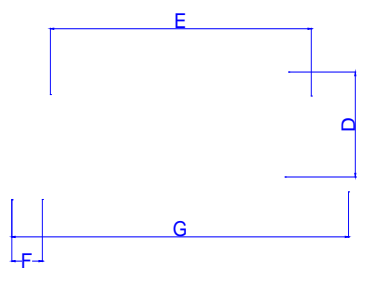
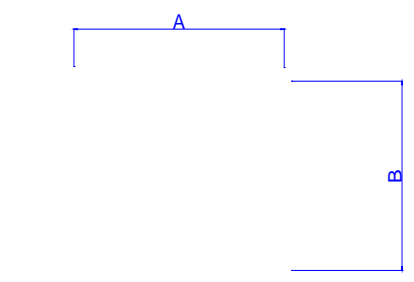


FIG.13: Test Circuits of Frequency Response



Package Dimension (Unit: mm)    Dimension in Millimeter    Dimension in Inches



CARRIER TAPE SPECIFICATIONS (Dimensions in mm unless otherwise stated)

Option T1



REFLOW INFORMATION

